

ILLUMINA[®]

BS105

FLUORESCENT (T5HO)



5ft - T5HO
Wet/IP66



Suspended Luminaire

Application: ILLUMINA[®] BS105 T5HO is a high performance luminaire that has been designed to offer an alternative solution to more traditional designs. The five foot length is easily installed and offers a lighting package of nearly 14,000 lumens. The three piece design snaps together without the need of any tools. The ILLUMINA[®] BS105 T5HO weighs a mere 9lbs. This suspended luminaire is 100% polycarbonate using stainless steel hardware and liquid silicon gasketing, making it corrosion, flame and vandal resistant. The ILLUMINA[®] BS105 T5HO is ideal for high ceiling environments.

Type: _____

Project: _____

CONFIGURE:

a	b	c	d	e	f
MODEL	LENGTH	OPERATION	LAMPS	INPUT	OPTIONS
BS105T5HO ILLUMINA [®] BS105 T5HO SERIES	5 5 foot	HT AC only	180W 1x80W T5HO 280W 2x80W T5HO	120V 277V 120/277V 347V	SS stainless steel clips AC aviation cable PK pendant kit FP inline fuse protection PK rigid pendant kit: 18", 24", 36" & 48" AC aviation cable: 50", 72", 100", 150" & 250" CH chain hang kit TP tamper proof <small>NOTE: (AC & PK) length to be specified, i.e. PK24 or AC100</small>
MODEL a	LENGTH b	OPERATION c	LAMPS d	INPUT e	OPTIONS f
BS105T5HO					

HOUSING: 100% UV stabilized polycarbonate material, integrated liquid silicone perimeter gasket with memory retention, recessed stainless steel mounting brackets.

REFLECTOR: Dual parabolic (2-lamp versions) and single parabolic (1-lamp version) high emission reflector. Vacuum metallized finish. Direct mount reflector configuration supports all electrical components.

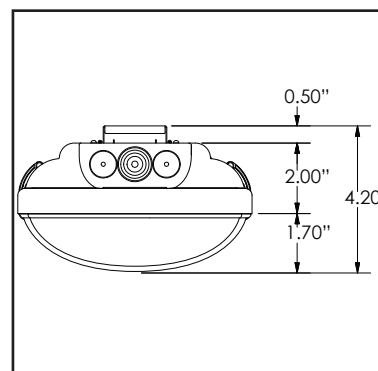
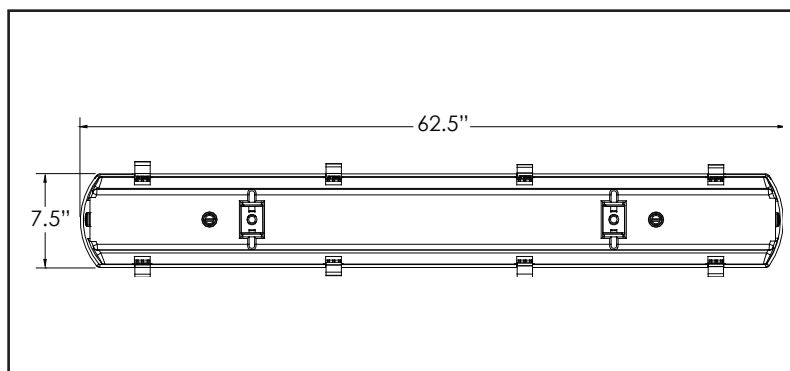
DIFFUSER: High performance diffuser. Complete light emission (CLE) technology. 100% Polycarbonate construction, impact resistant, UV stabilized to reduce yellowing index.

LAMP/SOCKET: Two (2) or four (4) T5HO ratchet type sockets with Beghelli T5HO adaptor extenders.

MOUNTING: Surface mount configuration as standard. Optional (AC) aviation cable, adjustable and

(PK) pendant mounting are available. Required mounting height to be specified.

POWER LINE/FEED: 3-wire, solid type 18awg, pre-stripped 12" leads for quick in-field connection.



ILLUMINA

BS105

FLUORESCENT (T8)



5ft - T8
Wet/IP66



Suspended Luminaire

Application: The ILLUMINA® BS105T8 has been designed to offer performance, efficiency, reliability and easy installation. The three piece design snaps together without the need of any tools. Construction is 100% polycarbonate, which makes it corrosion, flame and vandal resistant. The ILLUMINA® BS105T8 is ideal for parking structures, warehouses, breezeways, canopies and schools.

Type: _____

Project: _____

CONFIGURE:

a	MODEL	b	LENGTH	c	OPERATION	d	LAMPS	e	INPUT	f	OPTIONS
	BS105T8 ILLUMINA® BS105 T8 SERIES	5 5 foot		HT AC only		240W 2x40W T8		120V 277V 120/277V 347V		SS stainless steel clips FP inline fuse protection PK rigid pendant kit: 18", 24", 36" & 48" AC aviation cable: 50", 72", 100", 150" & 250" CH chain hang kit TP tamper proof <small>NOTE: (AC & PK) length to be specified, i.e. PK24 or AC100</small>	
	MODEL a	LENGTH b		OPERATION c		LAMPS d		INPUT e		OPTIONS f	
	BS105T8										

HOUSING: 100% UV stabilized polycarbonate material, integrated liquid silicone perimeter gasket with memory retention, recessed stainless steel mounting brackets.

REFLECTOR: Dual parabolic (2-lamp versions) and single parabolic (1-lamp versions) high emission reflector. Vacuum metallized finish. Direct mount reflector configuration supports all electrical components.

DIFFUSER: High performance diffuser. Complete light emission (CLE) technology. 100% Polycarbonate construction, impact resistant, UV stabilized to reduce yellowing index.

LAMP/SOCKET: Two (2) T8 ratchet type sockets.

MOUNTING: Surface mount configuration as standard. Optional (**AC**) aviation cable, adjustable and (**PK**) pendant mounting are available. Required mounting height to be specified.

POWER LINE/FEED: 3-wire, solid type 18awg, pre-stripped 12" leads for quick in-field connection.

